



# Ancestry.com ThruLines<sup>®</sup>

**Prepared for: GSGC DNA Special Interest Group**

**19 Jul 2022**

**Bob Dahlin**

# Changes...

- **In February 2019 Ancestry.com announced ThruLines (Beta). About 6 months later it was in production.**
- **ThruLines replaced DNA Circles. DNA Circles went away.**
- **Common Ancestor Hints replaced Shared Ancestor Hints.**

# What is ThruLines<sup>©</sup>

It is a tool that compares the people in your family tree with the people in the family trees of your DNA matches (and other public trees) and suggests all common ancestors (not just MRCA). It suggests how your matches are related to you.

It is only as accurate as the information in your tree and the information in the tree of your DNA match. It will give results back to your fifth great grandparents (sixth cousins).

# What do you need to make it work?

- **Your DNA results must be attached to a public or private shareable family tree.**
- **Your match's results must be attached to a public or private shareable family tree.**
- **The further back your tree and your match's tree goes the more likely you are to get a match (at least 3-4 generations). Don't forget robustness.**

# How can ThruLines Help You?

- It can suggest how your DNA matches are related to you and through which of your ancestors. When you understand how your cousins are related to you, they may be able to provide information about your ancestors you don't know.
- It can suggest common ancestors that are not in your tree.
- It can suggest information about the ancestors you know such as additional marriages, and undiscovered children.



Once you have a DNA match, you  
have to do the genealogy!

~Cece Moore

# How Do You Get To ThruLines?

The screenshot shows the AncestryDNA website interface. At the top, there is a navigation bar with links for Home, Trees, Search, DNA, Help, and Extras. Below this, a user profile for 'Dahlin Family' is visible, along with a 'Recently modified' section featuring a card for 'Alfred Jay CANFIELD' and another for 'LIV BINKOWSKI'. A dropdown menu is open, listing options: 'Your DNA Results Summary', 'DNA Story', 'DNA Matches', 'ThruLines@', 'Traits', 'DNA Surveys', 'Activate A Test', and 'Buy Another Test'. A blue arrow points to the 'ThruLines@' option. At the bottom, there is a section for 'Hints from the 1950 U.S. Census' with cards for 'Paul James Atwood' and 'Peter Frank (P'.

The screenshot shows the AncestryDNA user dashboard. At the top, there is a section for 'AncestryDNA@ Traits' with a sub-header 'what else there is to learn about yourself—inside and out.' and a button 'Explore your traits'. Below this, there are three main sections: 'DNA Story' with a pie chart and 'RD' label; 'DNA Matches' showing a grid of match photos and statistics like '1 Starred matches' and '1000+ 4th cousins or closer'; and 'ThruLines@' which features a family tree diagram and the text 'ThruLines uses Ancestry trees to suggest how you may be related to your DNA matches through common ancestors.' A blue arrow points to the 'Explore ThruLines' button. At the bottom, there is a 'DNA ADDED' notification and a prompt to 'Answer some simple questions to help us learn more about you and'.

# ThruLines®

These ThruLines® are generated using Robert Dahlin's DNA results that are linked to Robert Ellison DAHLIN (1 May 1948) in Dahlin Family Tree

Filters ▾



## Parents



**Clayton Melford DAHLIN**

Father  
1918–2000



**Harriet May CANFIELD**

Mother  
1913–1993

## Grandparents



**SIMON Peter DAHLIN  
(ANDERSSON)**

Paternal grandfather  
1892–1963



**ALICE Elvira Theresa  
ELLISON**

Paternal grandmother  
1896–1978



**Clarence Ellis CANFIELD**

Maternal grandfather  
1868–1948



**Celina May REED**

Maternal grandmother  
1879–1960



# Filters

Filters ^

- All ancestors (163) ✓
- Ancestors with new DNA matches (4)
- Potential ancestors (49)
- Ancestors in your linked tree (114)
- Maternal ancestors (81)
- Paternal ancestors (82)

AH

View another test

# ThruLines®

These ThruLines® are generated using Robert Dahlin's DNA results that are linked to Robert Ellison DAHLIN (1 May 1948) in Dahlin Family Tree

Filters

## Parents

**2 DNA matches**  
between 814 and 1,542 cM  
Evaluate relationship paths

**Clayton Melford DAHLIN**  
Father  
1918-2000

**Harriet May CANFIELD**  
Mother  
1913-1993

## Grandparents

**SIMON Peter DAHLIN (ANDERSSON)**  
Paternal grandfather  
1892-1963

**ALICE Elvira Theresa ELLISON**  
Paternal grandmother  
1896-1978

**Clarence Ellis CANFIELD**  
Maternal grandfather  
1868-1948

**Celina May REED**  
Maternal grandmother  
1879-1960

ancestry.com/discoveryui-geneticfamily/.../72DD0016-3C9F-4A9B-90CE-AC6F00CAA723

June 2022

Show all



## Relationships



List



**Clayton M DAHLIN**

Father

1918-2000



**Robert Dahlin**



**Jane R " DAHLIN**



Sister

1951-



2 DNA Matches



 Relationships  List



**Clayton M DAHLIN**

Father  
1918-2000



**Jane R " DAHLIN**

Sister  
1951-



2 DNA Matches

**AC**

**Anne Carstens**

Niece

1,542 cM | 42 segments

**KC**

**KATELYN CARSTENS**

Grandniece

814 cM | 28 segments



**Robert Dahlin**



**Joseph R CARSTENS**

Nephew  
1982-



# Finding Your Relationship to DNA Cousins

1827-1891  
2nd Great Grandparents



**Elias Persson**  
2nd great-grandfather  
1840-1867

2nd great-grandmother  
1823-1891



**Johanna Beata Bengtsdotter**  
2nd great-grandmother  
1843-

2nd great-grandfather  
1832-



**JOHANNES JOHANSSON**  
2nd great-grandfather  
1843-1927

2nd great-grandmother  
1831-1861



**JOHANNA ERIKSDOTTER**  
2nd great-grandmother  
1847-1915



**Jacob Moses CANFIELD**  
2nd great-grandfather  
1790-1865



**Prussia EDWARDS**  
2nd great-grandmother  
1797-1875



**Ellis Freeman CONDIT**  
2nd great-grandfather  
1811-1887



**Lucinda CORBY**  
2nd great-grandmother  
1811-1881



**William H Reed**  
2nd great-grandfather  
1825-1876



**Janette H. McIntyre**  
2nd great-grandmother  
1826-1887



**Charles Henry RIEFF, Sr.**  
2nd great-grandfather  
1828-1873



**Caroline 'Carrie' Marie GIROD**  
2nd great-grandmother  
1827-1884



Janette H. McIntyre  
2nd great-grandmother

William Henry REED  
Great-grandfather  
1856-1903

Celina May REED  
Maternal grandmother  
1879-1960  
3 DNA Matches

Helena Harriet Reed  
Grandaunt  
1880-1940  
3 DNA Matches

Alfred Julian Reed  
Granduncle  
1887-

David Riker  
1st cousin 1x removed  
1906-1982

Charles Abram Riker  
1st cousin 1x removed  
1921-1991

3

Meryl Jean Riker  
2nd cousin  
1934-

Susan Carol Riker  
2nd cousin  
1955-

SG

Private  
2nd cousin 1x removed

TINA RIKER  
2nd cousin

sgherman179  
2nd cousin 2x removed  
128 cM | 3 segments

CF

TINA RIKER  
2nd cousin  
212 cM | 11 segments

Christina Fitzpatrick  
2nd cousin 1x removed  
42 cM | 3 segments

KG

kgtgir1  
2nd cousin 2x removed  
46 cM | 3 segments



Janette H. McIntyre  
2nd great-grandmother



**William Henry REED**  
Great-grandfather  
1856-1903

**Celina May REED**  
Maternal grandmother  
1879-1960

3 DNA Matches

**Helena Harriet Reed**  
Grandaunt  
1880-1940

3 DNA Matches

**Alfred Julian Reed**  
Granduncle  
1887-



**David Riker**  
1st cousin 1x removed  
1906-1982

**Charles Abram Riker**  
1st cousin 1x removed  
1921-1991

**Alice Jeanette Reed**  
1st cousin 1x removed  
1914-2004

**Meryl Jean Riker**  
2nd cousin  
1934-

**Susan Carol Riker**  
2nd cousin  
1955-

**TINA RIKER**  
2nd cousin  
212 cM | 11 segments

**Royden A Jacobus**  
2nd cousin  
1941-2011

**Private**  
2nd cousin 1x removed

EVALUATE

**CF**

**Christina Fitzpatrick**  
2nd cousin 1x removed  
42 cM | 3 segments

**Cheryl Ann Jacobus**  
2nd cousin 1x removed  
1965-

**KG**

**kgtgirl1**  
2nd cousin 2x removed  
46 cM | 3 segments

**SG**

**sgherman179**  
2nd cousin 2x removed  
128 cM | 3 segments





**Unequal matches between  
Ancestor Pairs**

## 2nd Great Grandparents



**ANDERS CARLSSON**

2nd great-grandfather  
1827-1891



**MAJA Cajsa  
SVENSDOTTER**

2nd great-grandmother  
1823-1891



**9 DNA matches**

between 12 and 1,635 cM  
Evaluate relationship paths

**JOHANNES  
MAGNUSSON**

2nd great-grandfather  
1832-



**MAJA "Maria"  
JOHANSBOTTER**

2nd great-grandmother  
1831-1861



**Elias Persson**

2nd great-grandfather  
1840-1867



**Johanna Beata  
Bengtsdotter**

2nd great-grandmother  
1843-



**JOHANNES  
JOHANSSON**

2nd great-grandfather  
1843-1927



**JOHANNA ERIKSDOTTER**

2nd great-grandmother  
1847-1915



**Jacob Moses CANFIELD**

2nd great-grandfather  
1790-1865



**Prussia EDWARDS**

2nd great-grandmother  
1797-1875



**Ellis Freeman CONDIT**

2nd great-grandfather  
1811-1887



**Lucinda CORBY**

2nd great-grandmother  
1811-1881

## 2nd Great Grandparents



**ANDERS CARLSSON**

2nd great-grandfather  
1827-1891



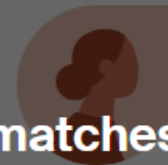
**MAJA Cajsa  
SVENSDOTTER**

2nd great-grandmother  
1823-1891



**JOHANNES  
MAGNUSSON**

2nd great-grandfather  
1832-



**7 DNA matches**

between 43 and 1,635 cM  
Evaluate relationship paths >

**MAJA "Maria"  
JOHANDOTTER**

2nd great-grandmother  
1831-1861



**Elias Persson**

2nd great-grandfather  
1840-1867



**Johanna Beata  
Bengtsdotter**

2nd great-grandmother  
1843-



**JOHANNES  
JOHANSSON**

2nd great-grandfather  
1843-1927



**JOHANNA ERIKSDOTTER**

2nd great-grandmother  
1847-1915



**Jacob Moses CANFIELD**

2nd great-grandfather  
1790-1865



**Prussia EDWARDS**

2nd great-grandmother  
1797-1875



**Ellis Freeman CONDIT**

2nd great-grandfather  
1811-1887



**Lucinda CORBY**



2nd great-grandmother  
1811-1881

# Why would there be a different number of matches in the same set of Grandparents?

- **An error in your tree or your match's.**
- **A multiple marriage.**
- **A non-parental event.**

# ThruLines® for MAJA "Maria" JOHANSDOTTER

ThruLines® uses Ancestry® trees to suggest that you may be related to 7 DNA matches through MAJA "Maria" JOHANSDOTTER.

 Relationships  List



**MAJA " JOHANSDOTTER**

2nd great-grandmother

1831-1861



**MATILDA JOHANSDOTT...**

Great-grandmother

1857-1930



7 DNA Matches




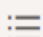
2 



**Robert Dahlin**

# ThruLines<sup>®</sup> for JOHANNES MAGNUSSON

ThruLines<sup>®</sup> uses Ancestry<sup>®</sup> trees to suggest that you may be related to 9 DNA matches through JOHANNES MAGNUSSON.

 Relationships  List



**JOHANNES MAGNUSSON**

2nd great-grandfather  
1832-



**MATILDA JOHANSDOTT...**

Great-grandmother  
1857-1930



7 DNA Matches



2 ▾



**Robert Dahlin**



**Johansson/Magnusson**

Half great-grandaunt  
1874-1938

EVALUATE

2 ▾



**Thomas Lundh**

Half 3rd cousin

12 cM | 1 segments



**Potential Ancestors**

## 4th Great Grandparents



**Petter Andersson**

4th great-grandfather



**Ingerd Jansdotter**

4th great-grandmother



**Anders Svensson**

4th great-grandfather  
1747-1816

**POTENTIAL ANCESTOR**



**Ingrid (Ingjerd)  
Andersdotter**

4th great-grandmother  
1760-1833

**POTENTIAL ANCESTOR**



**Lars Jonsson**

4th great-grandfather

**POTENTIAL ANCESTOR**



**Carin Jansdotter**

4th great-grandmother

**POTENTIAL ANCESTOR**



**Anders Andersson**

4th great-grandfather  
1761-1819



**Ingerd Svensdotter**

4th great-grandmother  
1760-1834



**Nils Andersson**

4th great-grandfather  
1753-1847



**Anna Andersdotter**

4th great-grandmother  
1781-1837



**Andreas Pettersson  
Friberg**

4th great-grandfather  
1773-1844

**POTENTIAL ANCESTOR**



**Märtha Jonsdotter**

4th great-grandmother  
1771-1839

**POTENTIAL ANCESTOR**



EVALUATE



Lars Jonsson  
4th great-grandfather



Kerstin Larsson  
3rd great-grandmother



5 DNA Matches >



MAJA C SVENSDOTTER  
2nd great-grandmother  
1823-1891



JOHAN F " ANDERSSON  
Great-grandfather  
1855-1941



SIMON (ANDERSSON)  
Paternal grandfather  
1892-1963



Clayton M DAHLIN  
Father  
1918-2000



Robert Dahlin





**(At least) Half of Genetic Genealogy is...**

**Genealogy!**

**~Diane Southard**


EVALUATE

 **Lars Jonsson**  
4th great-grandfather

 **Kerstin Larsson**  
3rd great-grandmother

 5 DNA Matches >



 **MAJA C SVENSDOTTER**  
2nd great-grandmother  
1823-1891

 **JOHAN F " ANDERSSON**  
Great-grandfather  
1855-1941

 **SIMON (ANDERSSON)**  
Paternal grandfather  
1892-1963

 **Clayton M DAHLIN**  
Father  
1918-2000

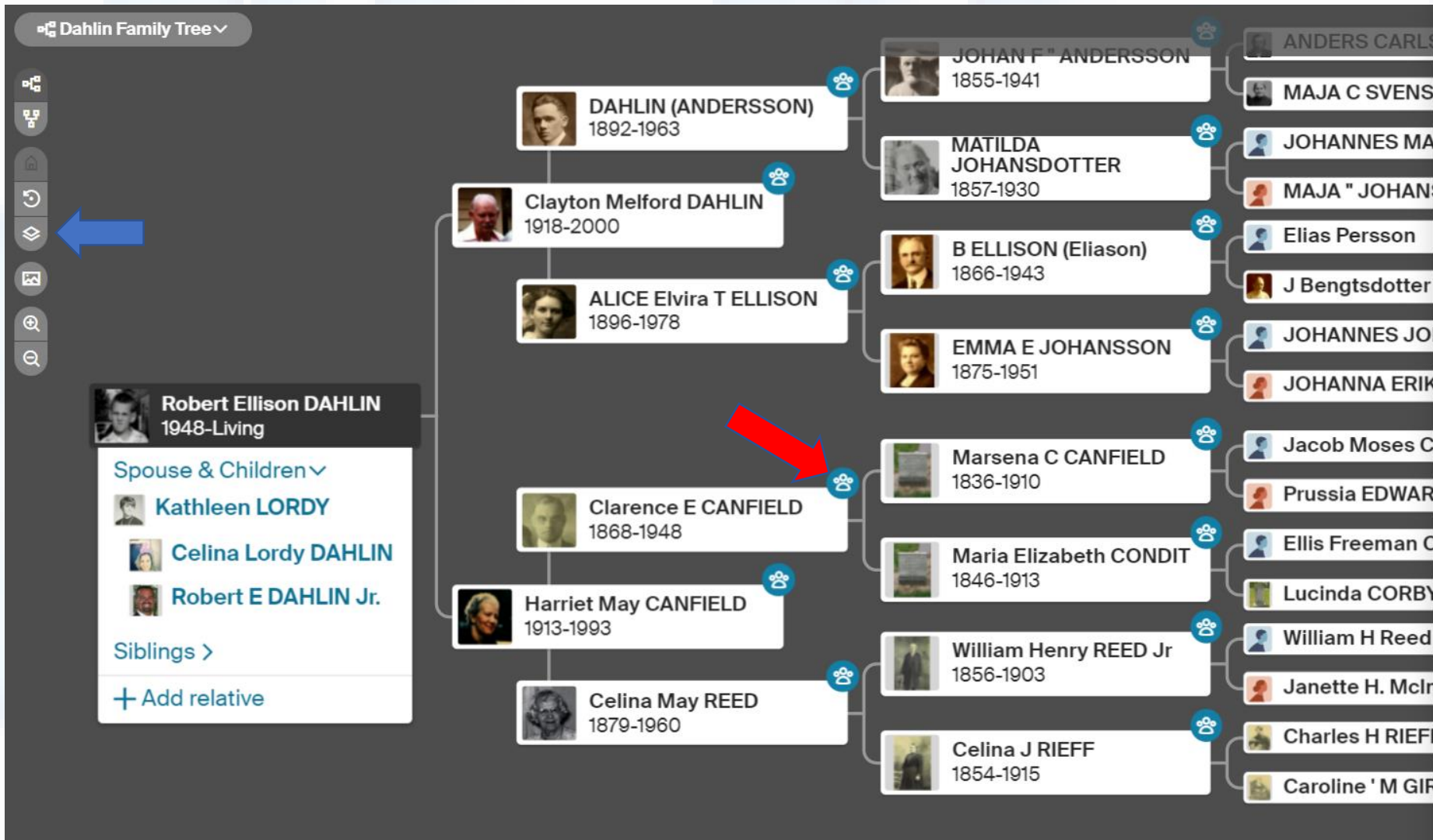


Robert Dahlin





# Accessing ThruLines through Your Family Tree



### Tree viewing options

Family view

Relationship line labels

Always view all spouses

DNA

Show DNA relationships using:  
Robert Dahlin's DNA Test

ThruLines® icons

Possible DNA matches

Connected DNA matches

**Robert Ellison DAHLIN**  
1948-Living

Spouse & Children ▾

- Kathleen LORDY**
- Celina Lordy DAHLIN**
- Robert E DAHLIN Jr.**

Siblings >

+ Add relative

**DAHLIN (ANDERSSON)**  
1892-1963

**JOHAN F " ANDERSSON**  
1855-1941

**ANDERS CARLSSON**

**MAJA C SVENSDOTTER**

**MATILDA**

**JOHANNES MAGNUSSON**

**MAJA " JOHANSBOTTER**

**Elias Persson**

**J Bengtsdotter**

**JOHANNES JOHANSSON**

**JOHANNA ERIKSDOTTER**



### Clarence Ellis CANFIELD

B: 11 Sep 1868 Newark, Essex, New Jersey, USA

D: 30 Aug 1948 Cedar Grove, Essex, New Jersey, USA

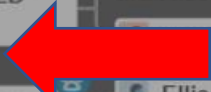
Profile

Search

Quick edit



ThruLines™



**Harriet May CANFIELD**  
1913-1993



**Celina May REED**  
1879-1960

**Maria Elizabeth CONDIT**  
1846-1913

**William Henry REED Jr**  
1856-1903

**Celina J RIEFF**  
1854-1915

**...sia EDWARDS**

**Ellis Freeman CONDIT**

**Lucinda CORBY**

**William H Reed**

**Janette H. McIntyre**

**Charles H RIEFF, Sr.**

**Caroline ' M GIROD**



## Clarence Ellis CANFIELD

B: 11 Sep 1868 Newark, Essex, New Jersey, USA

D: 30 Aug 1948 Cedar Grove, Essex, New Jersey, USA

Profile

Search

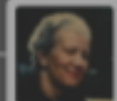
Quick edit



 ThruLines™

ThruLines suggests you may be related to one or more DNA matches through Clarence Ellis CANFIELD.

[View ThruLines for Clarence Ellis CANFIELD](#)



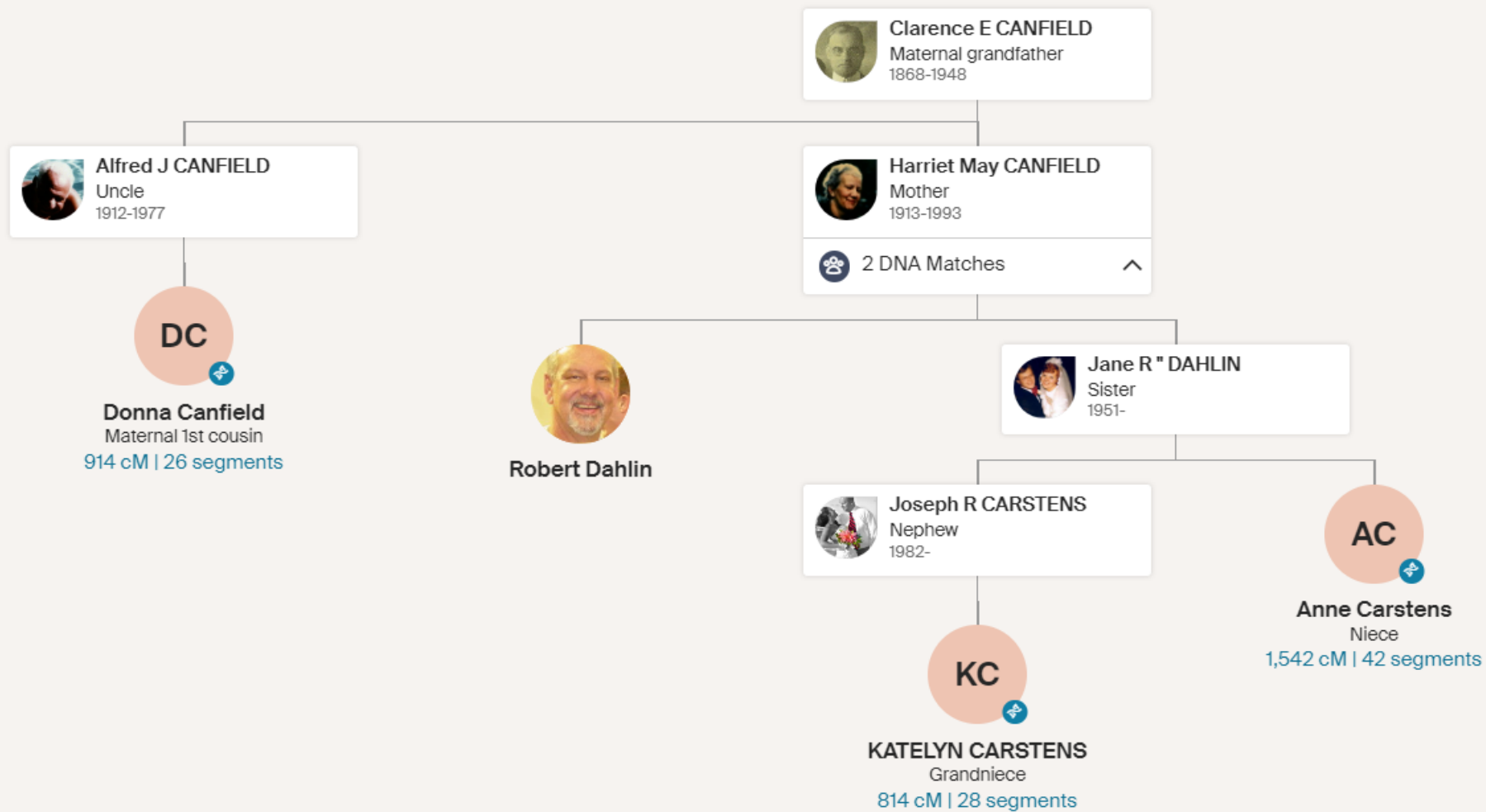
Harriet May CANFIELD  
1913-1993

Maria Elizabeth CONDIT  
1846-1913

# ThruLines® for Clarence Ellis CANFIELD

ThruLines® uses Ancestry® trees to suggest that you may be related to 3 DNA matches through Clarence Ellis CANFIELD.

Relationships ☰ List





David Riker  
1873-1958

Charles Abram Riker  
1921-1991

Helena Harriet Reed  
1880-1940

Arthur Setaro  
1902-1975

Mary Jane Setaro  
1930-Living

Mary C Blackowski  
1908-1982

Abram Riker  
1851-

Sarah Russell  
1851-

William Henry REED Jr  
1856-1903

Celina J RIEFF  
1854-1915

Leonardo " Setaro Sr  
1875-1929

Celia A Conway  
1876-1952

Peter F ( Blachowski  
1880-1951

Anna Furman  
1885-1960

David Riker

Elizabeth \_\_\_\_\_

Potential Father

Mary

William H Reed

Janette H. McInt

Charles H RIEFF,

Caroline ' M GIR

Vincenzo V Setar

Carmela M Marir

James Conway

Mary Friel

Add father

Add mother

Add father

### Tree viewing options

Family view

Relationship line labels

Always view all spouses

### DNA

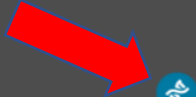
Show DNA relationships using:

Robert Dahlin's DNA Test

ThruLines® icons

Possible DNA matches

Connected DNA matches



Tina Marie Riker  
1962-Living

Siblings >

+ Add relative



## Tina Marie Riker

**B:** 6 Mar 1962 Toms River, Ocean, New Jersey, USA

**D:** [Living](#)

Profile

Search

Quick edit



Connected to DNA Match



Siblings >

+ Add relative



**Arthur Setaro**  
1902-1975



**Mary Jane Setaro**  
1930-Living



**Mary C Blackowski**  
1908-1982



**Abram Riker**  
1851-



**Sarah Riker**  
1851-



**William Riker**  
1856-1900



**Celina J. Riker**  
1854-1915



**Leonard Riker**  
1875-1925



**Celia A. Riker**  
1876-1955



**Peter F. Riker**  
1880-1955



**Anna F. Riker**  
1885-1965



## Tina Marie Riker

B: 6 Mar 1962 Toms River, Ocean, New Jersey, USA

D: [Living](#)

- Profile
- Search
- Quick edit
- 

**Connected to DNA Match** ^  
 From [Robert Dahlin's DNA Matches](#)



### TINA RIKER

2nd cousin

Shared DNA: 212 cM across 11 segments

[View match profile](#) Remove ?

[Siblings >](#)

[+ Add relative](#)



**Arthur Setaro**  
1902-1975

**Abram Riker**  
1851-

**Sarah Russell**  
1851-

**William Henry REED Jr**  
1856-1903

**Celina J RIEFF**  
1854-1915

**Leonardo " Setaro Sr**  
1875-1929

**Celia A Conway**  
1876-1952





# You and TINA RIKER

2nd cousin | Mother's side

3% shared DNA: 212 cM across 11 segments

Message

+ Add/edit groups Add note

Trees Ethnicity Shared Matches

How are you and TINA RIKER related?

## Common Ancestors

According to Ancestry member trees, these are the common ancestors that connect you and TINA RIKER. View a common ancestor to see the relationship path that connects you.

TINA RIKER could be your 2nd cousin through:



**William Henry REED**  
Great-grandfather  
1856-1903  
[View Relationship](#)



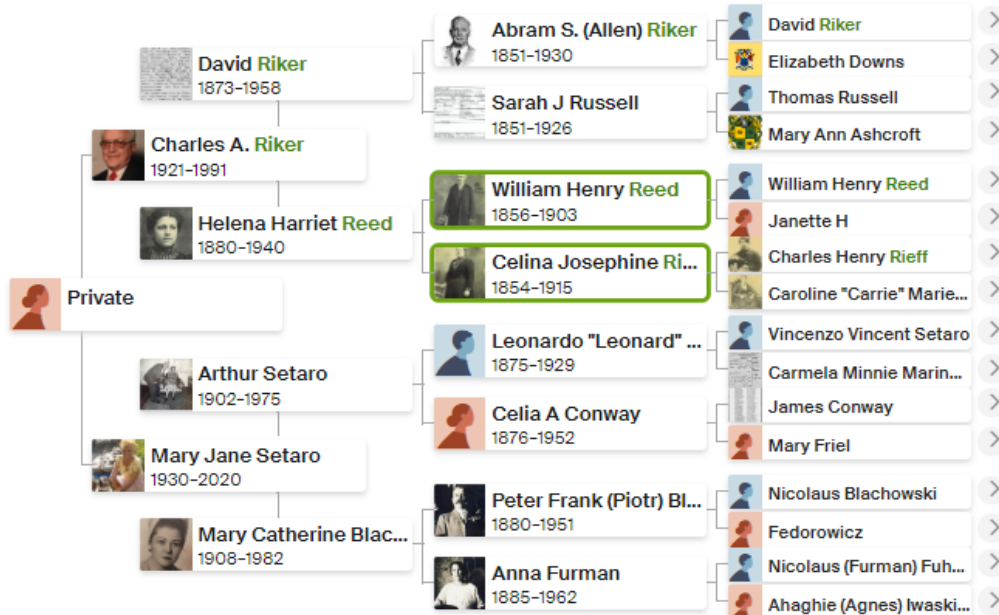
**Celina Josephine RIEFF**  
Great-grandmother  
1854-1915  
[View Relationship](#)

Riker-Setaro Family Tree

Expand tree

## TINA RIKER's Linked Tree 1,057 People

This is a preview of the public tree linked to TINA RIKER's DNA results. Surnames that appear in both your tree and TINA RIKER's tree are marked in green.





**TRIPLEJS3**

2nd – 3rd Cousin  
159 cM | 2% shared DNA

🔒 Private unlinked Tree

Do you recognize them?

Yes

Learn more



**karen seijas**

Managed by robert seijas

2nd – 3rd Cousin  
145 cM | 2% shared DNA

🚫 No Trees

Do you recognize them?

Yes

Learn more



**Dawn Canfield**

2nd cousin 1x removed  
134 cM | 2% shared DNA  
Mother's side

🌳 Public linked tree  
59 People  
👤 Common ancestor

View match



**sgherman179**

2nd cousin 2x removed  
128 cM | 2% shared DNA  
Mother's side

🌳 Public linked tree  
575 People  
👤 Common ancestor

View match



**johnwalsh54**

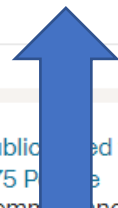
2nd – 3rd Cousin  
112 cM | 2% shared DNA

🌳 Public linked tree  
6 People

Do you recognize them?

Yes

Learn more





# You and Dawn Canfield

2nd cousin 1x removed | Mother's side

2% shared DNA: 134 cM across 5 segments

Message

Add/edit groups Add note

Trees Ethnicity Shared Matches

How are you and Dawn Canfield related?

## Common Ancestors

According to Ancestry member trees, these are the common ancestors that connect you and Dawn Canfield. View a common ancestor to see the relationship path that connects you.

Dawn Canfield could be your 2nd cousin 1x removed through:



Marsena C CANFIELD

Great-grandfather

1836-1910

View Relationship



Maria Elizabeth CONDIT

Great-grandmother

1846-1913

View Relationship

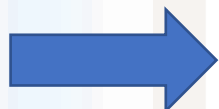
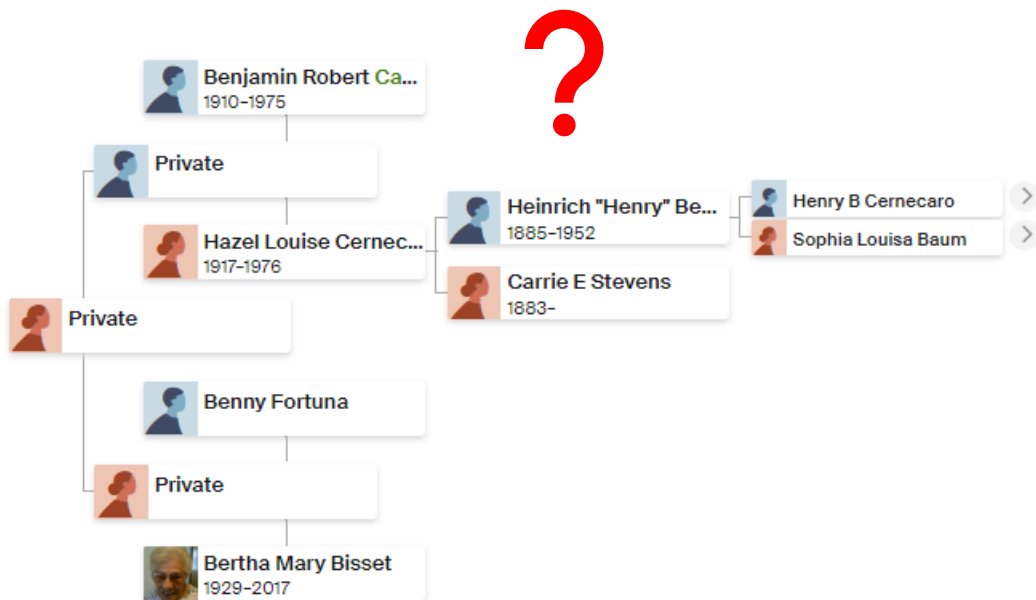
Canfield Family Tree

Expand tree

## Dawn Canfield's Linked Tree

59 People

This is a preview of the public tree linked to Dawn Canfield's DNA results. Surnames that appear in both your tree and Dawn Canfield's tree are marked in green.





# Questions?

Or you can e-mail me at: [redahlin1@gmail.com](mailto:redahlin1@gmail.com)